

NFuse/Citrix Installation for Windows 8

Accessing Citrix using Windows 8

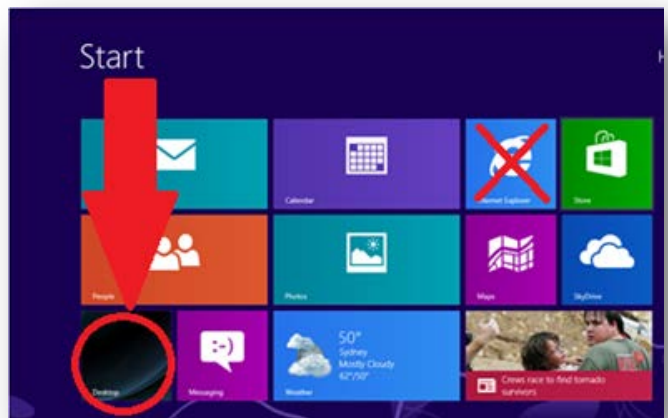
There are a few points to consider when trying to access Citrix on a Windows 8 machine:

- Use Microsoft Internet Explorer 10 and lower.
- Windows 8 RT is not currently supported by Citrix for access.
- Do not use the METRO version of Internet Explorer.
- The desktop browser must be used for access to Citrix applications.



Accessing Citrix

1. Select the desktop tile.
2. Select the Internet Explorer icon in the taskbar to launch the browser.
3. Type *citrix.ssfhs.org* or *access.ssfhs.org* in the address bar of your browser.
(Steps continued on next page.)



IE icon in Taskbar



NFuse/Citrix Installation for Windows 8

Downloading Citrix Receiver (ICA)

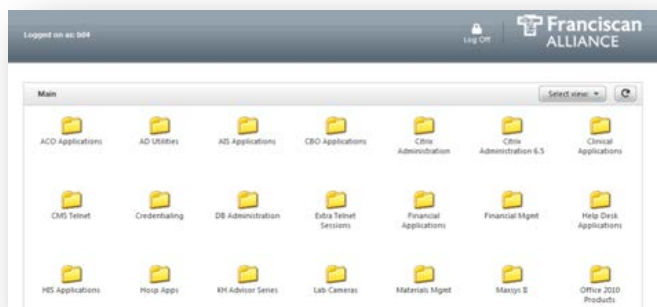
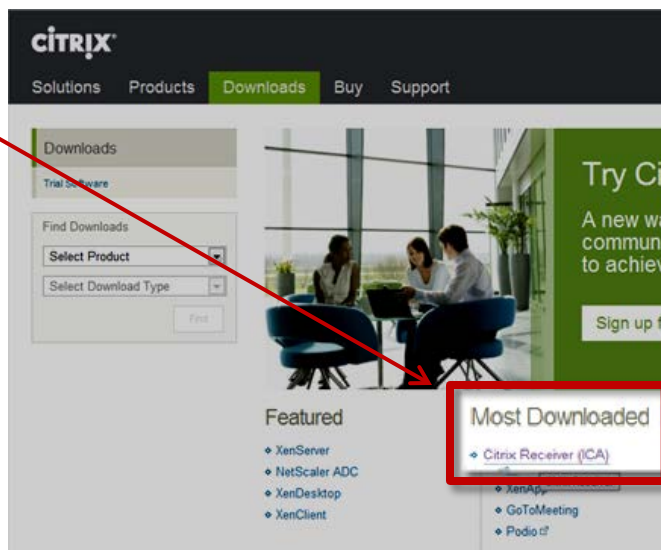
If you are on a PC that currently does not have a Citrix client installed you will get a prompt to install the software to access your Citrix applications.

1. Click **Install**. This will take you to the Citrix site to download the Client for your OS type.
2. From the Citrix website select the **Citrix Receiver (ICA)** link under Most Downloaded. This will take you to the Citrix Client.
3. Click **Download Receiver for Windows**, this will start the install.
4. For the **Citrix License Agreement**, place a checkmark in the **I Agree** box and click **Continue**.
Note: You may need to click the top line of the browser window if the browser is blocking access, and select **Download File** option.
5. Click **Run** on the **File Download – Security Warning** dialog box.
6. The Download progress box will appear.
7. Click **Yes** to allow the download if prompted.
8. Click **Install** to start the process.

Result: The Citrix Receiver will be installed on your PC. As soon as it finishes, you will see your Icon screen.

9. Close any other browser windows that were left open during the Client Install.

Note: If the Save Launch.ica message appears, click **Cancel**.



Citrix Main Menu Screen