

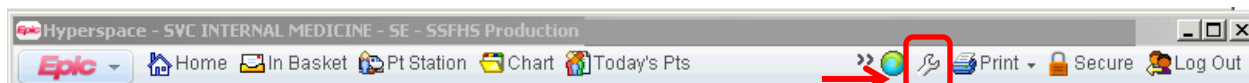
Adding UpToDate to Hyperspace Toolbar

Audience: Providers and clinicians who access the UpToDate on-line medial resource.

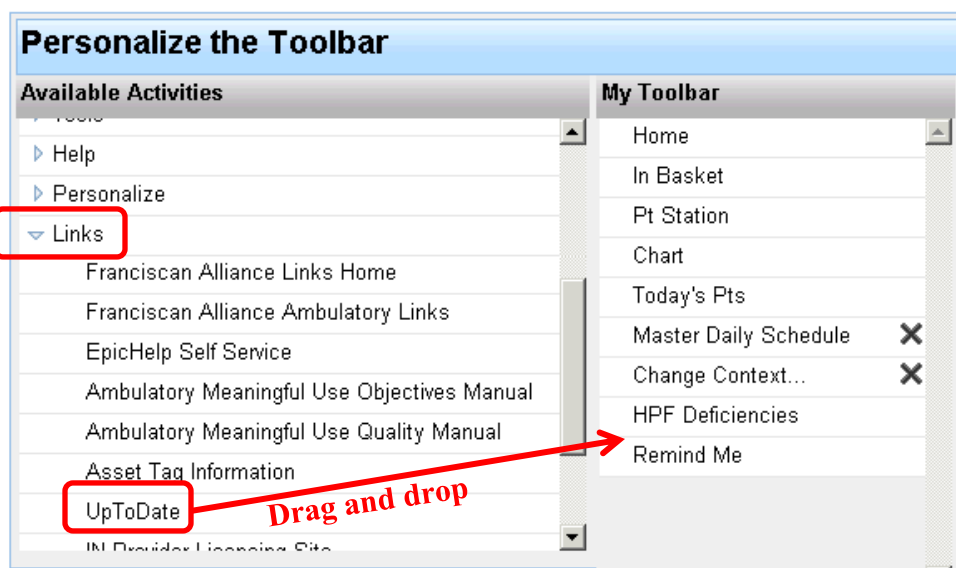
Summary: This document explains how a user can add the link for UpToDate on their Hyperspace Epic toolbar for easy access.

Add UpToDate to My Toolbar

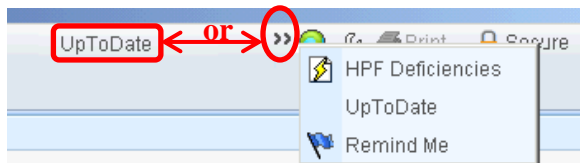
1. Click on wrench icon in the main Hyperspace Epic toolbar to access the Personalization Activity:



2. From “Available Activities” on the left side, scroll down and click on Links divot.
3. Drag and drop UpToDate over to “My Toolbar” section on the right side.



4. Click Accept to close activity.
5. UpToDate icon will either display on toolbar bar, or may be found in the >> more items indicator.



Note: You can use the above steps to add any of the Available Activities to your Toolbar. You can also drag and drop to re-arrange the order of the icons.